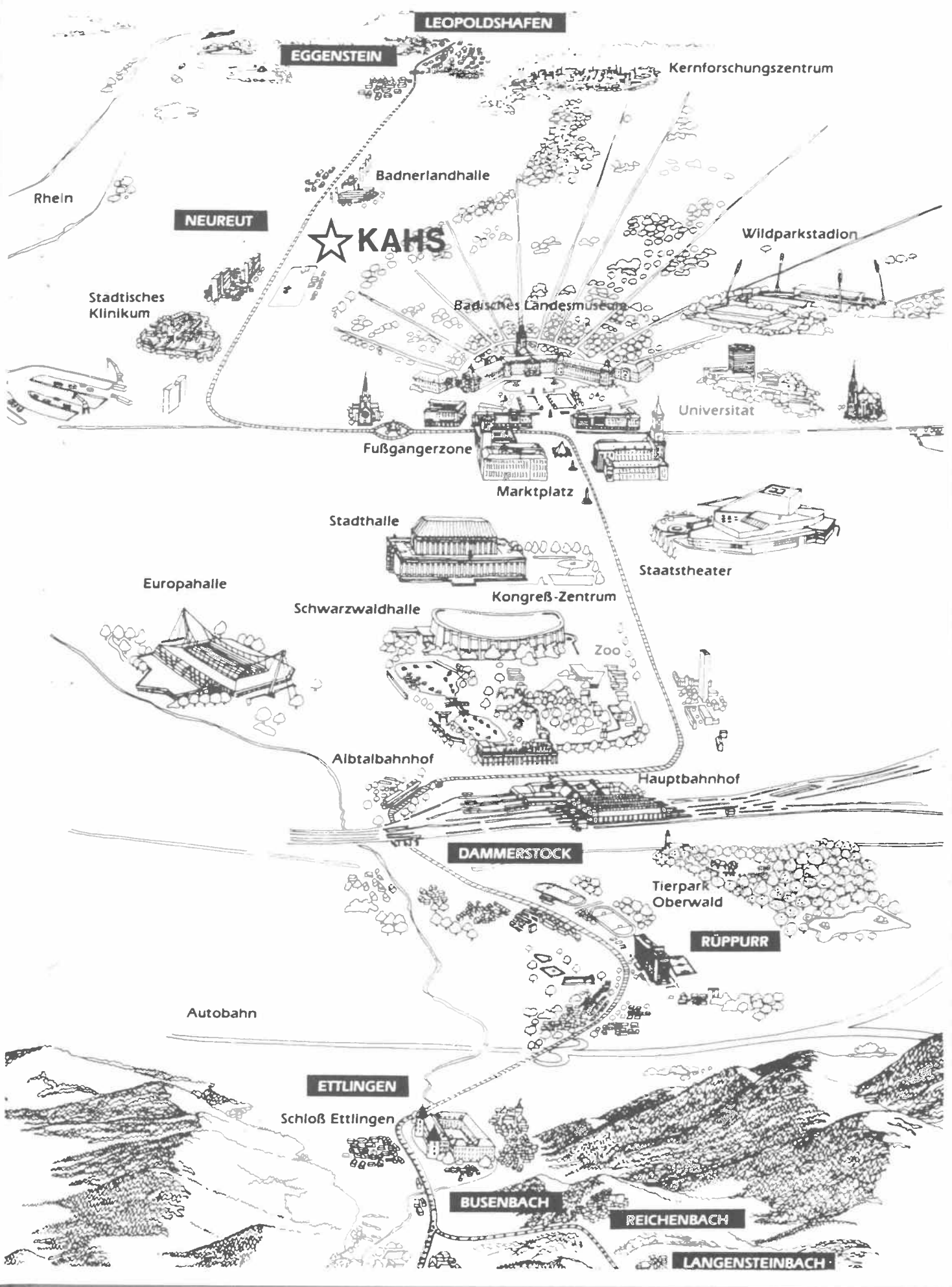




MR. PETER J. ...

KNIGHTS AT HOME



LEOPOLDSHAFEN

EGGENSTEIN

Kernforschungszentrum

Rhein

NEUREUT

Badnerlandhalle

★ **KAHS**

Wildparkstadion

Städtisches
Klinikum

Badisches Landesmuseum

Universität

Fußgängerzone

Marktplatz

Stadthalle

Staatstheater

Europahalle

Kongreß-Zentrum

Schwarzwaldhalle

Zoo

Albtalbahnhof

Hauptbahnhof

DAMMERSTOCK

Tierpark
Oberwald

RÜPPUR

Autobahn

ETTLINGEN

Schloß Ettlingen

BUSENBACH

REICHENBACH

LANGENSTEINBACH

DER KAVALIER '87

Contents

Page 2	Theme
Page 25	Admin./Faculty
Page 31	Classes
Page 55	Activities
Page 69	Sports
Page 87	Closing



**AT
HOME**



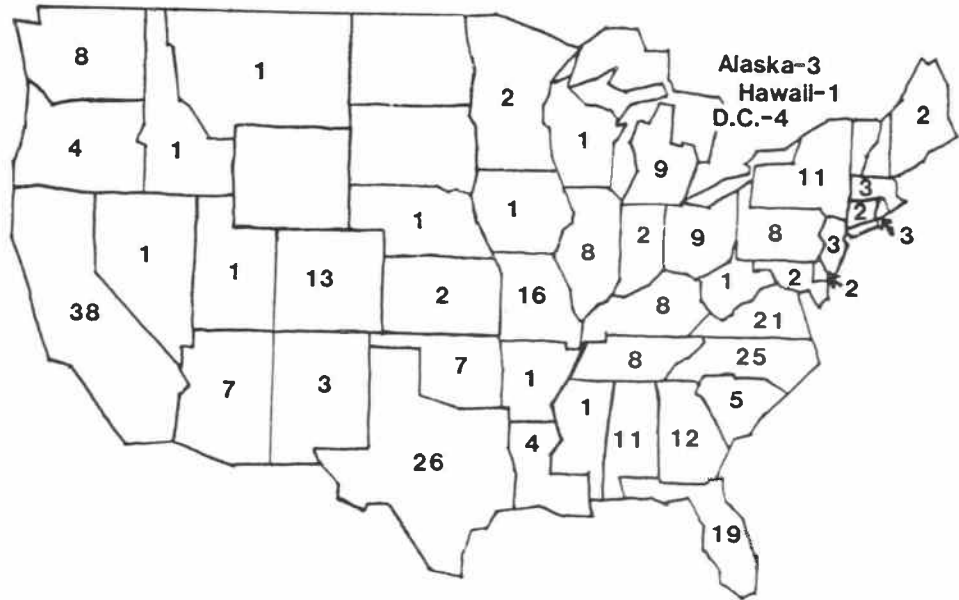
AWAY FROM HOME

KARLSRUHE AMERICAN HIGH SCHOOL

This student publication is an authorized unofficial publication for students and parents of Karlsruhe High School. Contents of "Der Kavalier" are not necessarily the official views of Karlsruhe High School, DoDDS-Germany Region, the Department of Defense, or the United States Government. Opinions and views expressed are the personal opinions and views of writers, editors, and contributors to "Der Kavalier" and are not necessarily shared by the entire student body, faculty, or administration of Karlsruhe High School. The appearances of displays or reproductions in this publication concerning any commercial products or publications do not constitute an endorsement by the DoDDS-Germany Region.

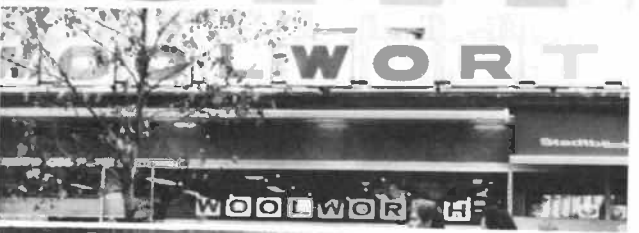
WE ALL CALL DIFFERENT PLACES "HOME"

KAHS students are a diverse group and the majority of the fifty states is represented by at least one member of our student body. Students were polled as to what state they considered "home" and the results of the poll are shown graphically on the right.



SOME THINGS HERE REMIND US OF PLACES WE LEFT;

THEATER



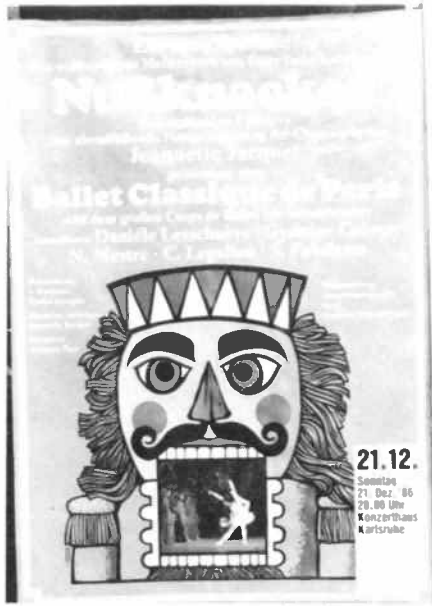


**BUT IN 1987, OUR
"HOME," FOR A TIME
ANYWAY, IS
KARLSRUHE, GERMANY.**

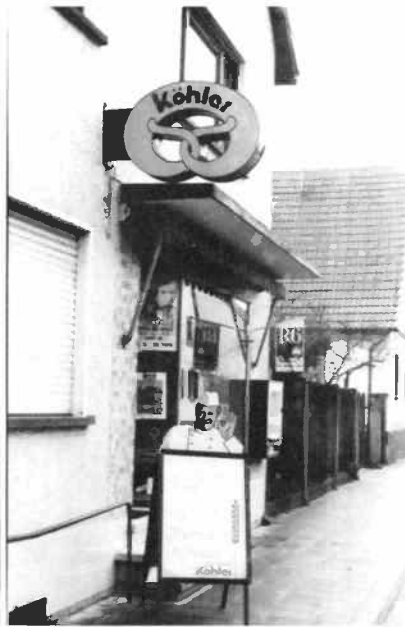


SOME THINGS ARE VERY DIFFERENT!





Ballet is possible . . .



Bakeries are a favorite . . .



Tried buying a strasse ticket?

THERE ARE LOTS OF NEW EXPERIENCES,



Fountains abound . . .



Phones can confuse . . .



Statue and Schloss . . .



A half-timbered house and chess in the park.



